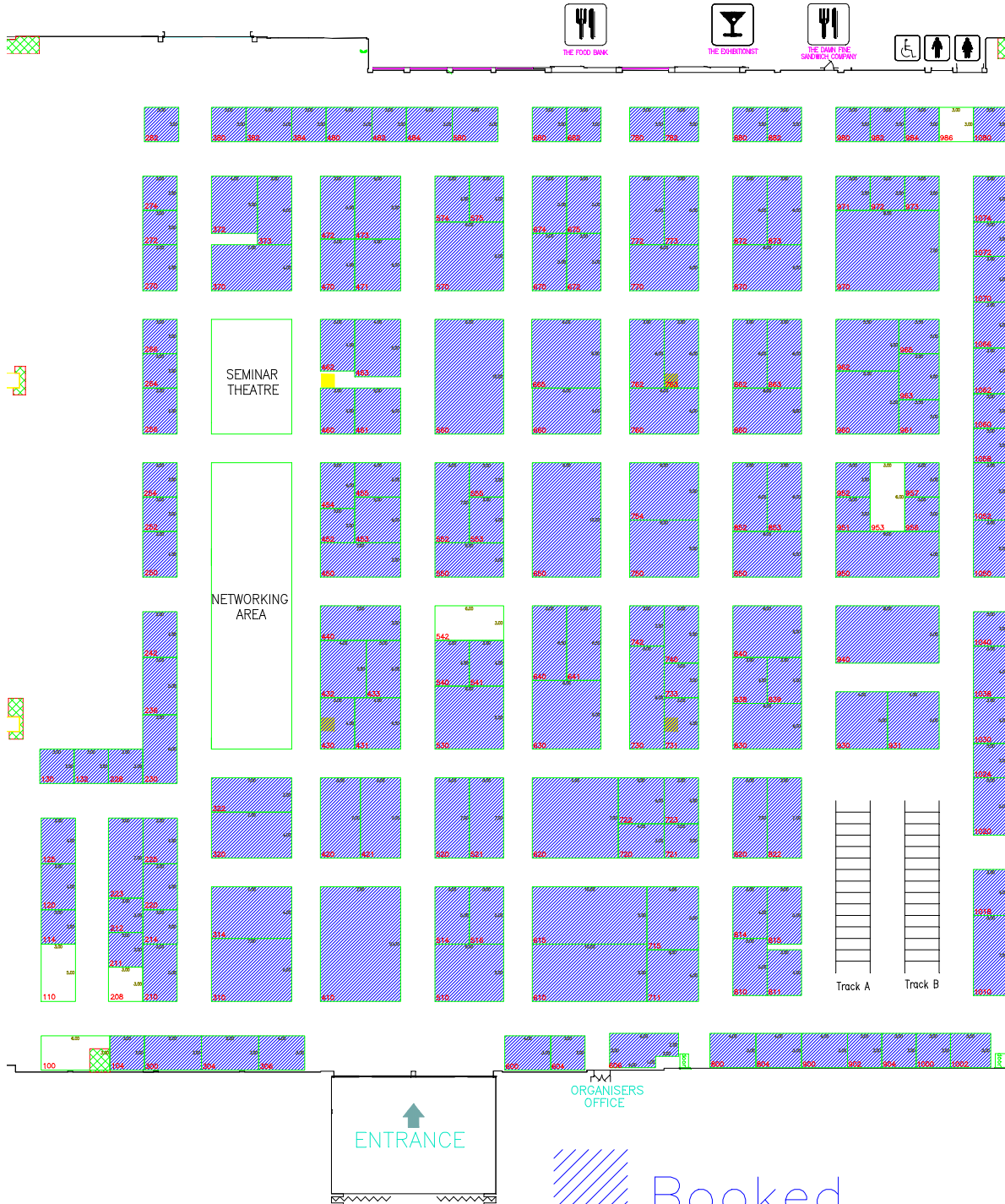


IFRARAIL 2010

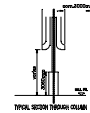
13 - 15 April 2010
 NEC, Birmingham
 HALL 20



LEGEND

- | | |
|-----------------------------------|---|
| RESTRICTED HEADROOM AROUND COLUMN | SERVICES AREA TO BE KEPT CLEAR AND UNOBTAINED |
| COLUMN (0.20m x 1.20m) | MANUAL FIRE ALARM |
| VOID AREA | FIRE DOOR (SEE PD01 1.5) |
| SERVICE POINT | DOUBLE SOCKET & CIRCUIT BREAKER (PD01 125mm) |
| FIRE PANEL | BACKOUT ALARM CONTROL PANEL |
| DATA PANEL | FIRE EXTINGUISHER |
| CABLE TRAY AT LOW LEVEL | COMPUTER CONTROL UNIT |
| CABLE TRAY AT HIGH LEVEL | RESTRICTION BOARD |
| | PUBLIC TELEPHONE |

Booked



Max. Construction Height : 6.50m
 Clear Headroom : 1.0m
 (except in areas with restricted headroom)
 Max. Floor Loading : 20t/m (2t/sqft)